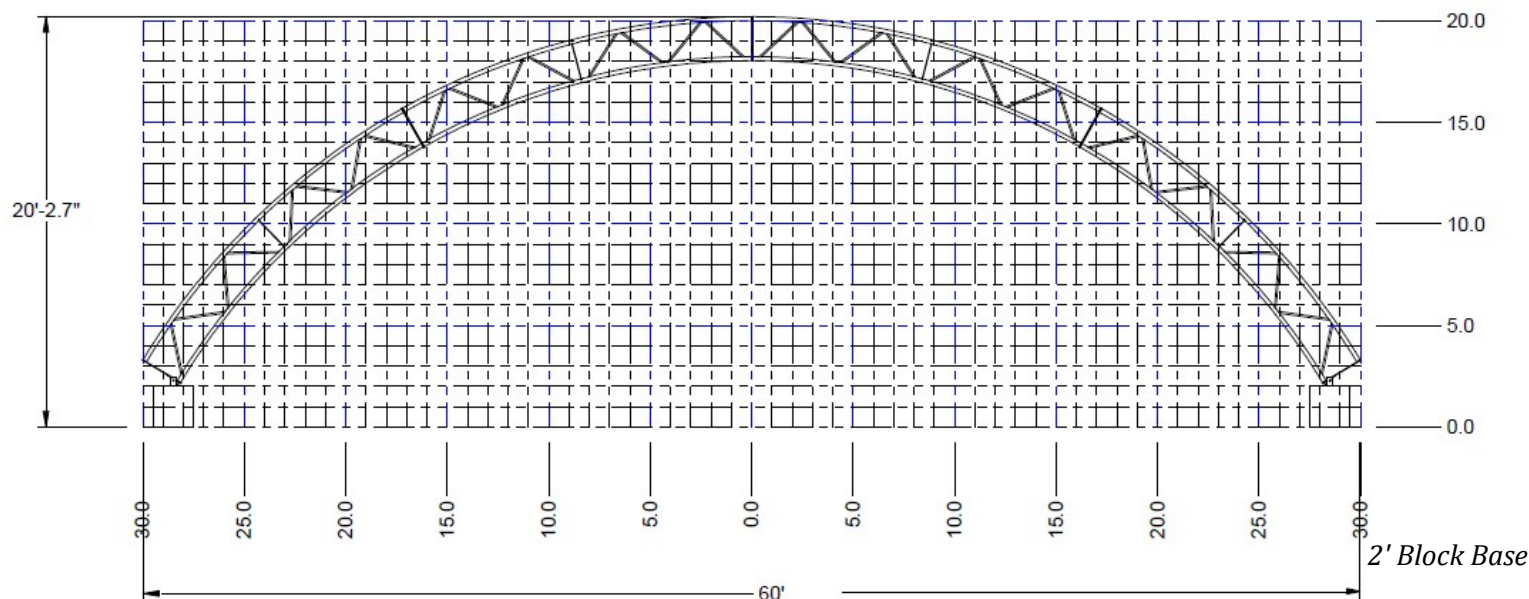




60' Wide Heritage Structure



1-888-497-1088



Frame

- **Rafters:** Welded truss construction with 2 3/8-inch 13 gauge top and bottom chords.
- **Rafter spacing:** 10', 12', 14' or 16' spacing starting at 40' long to any length.
- **Pony wall model:** Flat base plate must set on 10" minimum concrete wall. Wall must be at least 2' tall to allow for tensioning. Not recommended for wood posts.
- **Assembly:** Easy to assemble. Each rafter comes in sections with separate purlins for easy shipping.

Fabric

- **20 year Elite** high density UV resistant polyethylene with pipe pockets.
- **Colors:** White, Blue, Green, Red, Tan, and Silver/Gray. Available as solid color buildings or with colored conestoga ends or stripes.

Tensioning

- **Side Tensioning:** Steel pipe with 2" tie down ratchets at every rafter.
- **End Tensioning:** Pipe pocket for PVC and ratchet straps.
- **Conestoga Tensioning:** Coated steel cable.

Options

- Fabric **end walls** with steel supports and pockets for PVC pipe and ratchets.
- Ridge or end **vents**.

Included

- Frame, cover, lag bolts, assembly hardware.

Not included

- Posts, rub rails, baseboards or concrete anchors.



hoopbarn.com
Infinite Earth, LLC
Marion, SD USA
1-888-497-1088