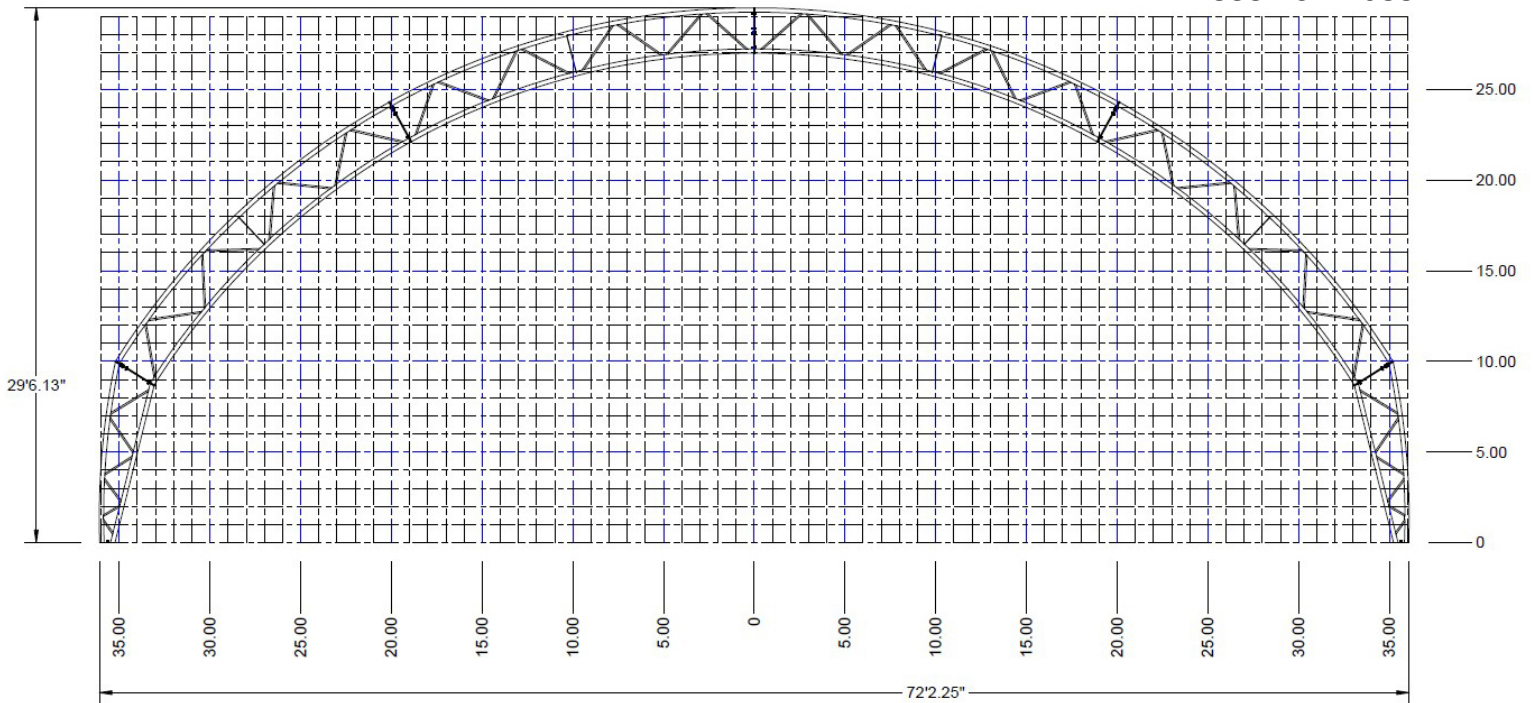




## 72' Wide Truss Building



1-888-497-1088



### Frame

- **Rafters:** Welded truss construction with 2.875-inch 12 gauge top and bottom chords.
- **Rafter spacing:** 10', 12', 14' or 16' spacing starting at 40' long to any length.
- **Base Plate:** Flat base plate may be set on concrete at ground height or mounted on a wall if additional height is desired
- **Assembly:** Easy to assemble. Each rafter is in sections and purlins are separate for easy shipping.

### Fabric

- **20 year Elite** high density UV resistant polyethylene with pipe pockets.
- **Colors:** White, Blue, Green, Red, Tan, and Silver/Gray. Available as solid color buildings or with colored conestoga ends or stripes.

### Tensioning

- **Side Tensioning:** Steel pipe with 2" tie down ratchets at every rafter.
- **End Tensioning:** Pipe pocket for PVC and ratchet straps.
- **Conestoga Tensioning:** Coated steel cable.

### Options

- Fabric **end walls** with steel supports and pockets for PVC pipe and ratchets.
- Ridge or end **vents**.

### Included

- Frame, cover, lag bolts, assembly hardware.

### Not included

- Posts, rub rails, baseboards or concrete anchors.



hoopbarn.com  
Infinite Earth, LLC  
Marion, SD USA  
1-888-497-1088